

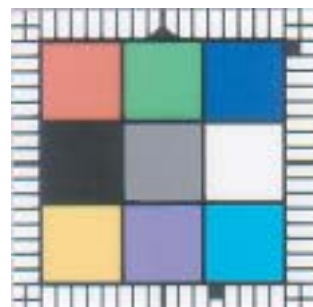


CASMATCH is a standard color chart that is used to adjust tones and sizes of color images to a certain level when affected parts of the body are recorded in color.

By using CASMATCH in combination with image editing software Adobe Photoshop 7.0, photographs that were taken in various situations can be adjusted so that their color tones and sizes will look closer to actual images of subjects, thus facilitating comparative studies of cases.

CASMATCH will be useful for keeping records of clinical images and making presentations at academic conferences.

- Makes it easy to keep tracks of changes in subject's condition over time and course of treatment for the same subject.
- Facilitates comparisons and contrasts of photographs of different subjects that were taken under different conditions.
- Clearly reproduces subtle colors of affected areas that were difficult to reproduce by conventional methods.
- Adjusts colors of photographs that were taken under inadequate exposure conditions (underexposure or overexposure) and photographs with defective color tones, so that they will look closer to the actual colors of subjects.
- Usable as a measure for the sizes of affected areas because each sticker is graduated in millimeters.
- Adjusts variations of color tones due to differences in film manufacturer, processing laboratory, film scanner, digital camera, etc.
- Adjusts colors of old, discolored photographs.
- Makes image management easier because you can digitize photographs adjusting color tones to a certain level.



Peel CASMATCH off the backing, and place it near the affected area to be shot with the square mark of the graduations pointed upward, at an angle where the sticker will not reflect flash.